

He whakarāpopoto Summary overview

Te Mahere Whakahaere
me te Whakaiti Para

(Draft) Joint Waste
Management and
Minimisation Plan

2025 - 2031





Secondhand shopping

Te tono

The proposal

We need to adopt a new Joint Waste Management and Minimisation Plan (WMMP) for Heretaunga Hastings and Ahuriri Napier, replacing the current plan.

A review is required every six years under the Waste Minimisation Act 2008.

The Joint Waste Management and Minimisation Plan (WMMP) sets out how the partner councils will ensure effective and efficient waste management in Heretaunga Hastings and Ahuriri Napier. It's a six-year plan, providing details of how we will work with partners, businesses and the community to collectively manage and minimise waste.

In this summary document, you can read about the issues we've identified in our recent waste assessment, the actions we're planning to take, and how we're planning to fund those actions. You can also find out how you can have your say on this draft plan.

We've aligned this plan with policies, regulations, and national goals while tailoring it to our communities.



Tō nāienei pūāhua?

Where are we now?

To plan for the future, we all need to be aware of how much waste we create. In Heretaunga Hastings and Ahuriri Napier, councils, businesses, and not-for-profits offer facilities and services to help manage and reduce waste.

The best way to measure our progress is by looking at waste per capita - the total waste from businesses, hospitals, households, and more, divided by the population. This helps us compare progress over time and with other regions.

The good news is that Heretaunga Hastings and Ahuriri Napier produce less waste per capita (596kg) than the national average (706kg).

While we're doing well compared to the national average, we can still do better. Nearly 40 per cent of waste in our landfill comes from materials that could be composted or recycled under our current system.



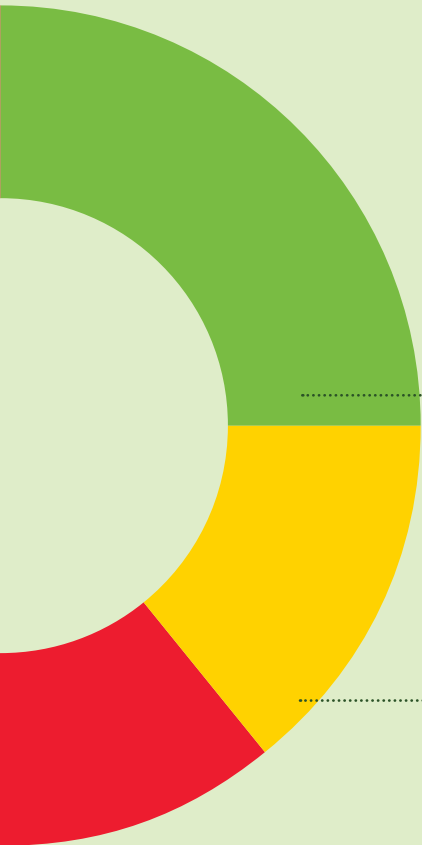
Landfill
61%

Total
waste to
Ōmarunui
Landfill

596kg

This is how much waste we produce per person per year in our area.

Nearly 40% could have been recycled or composted.



Compostable materials
25%

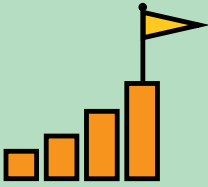


Recyclable materials
14%



Tō nāienei pūāhua?

Where are we now?



Ngā Wero Challenges

- Balancing tough economic conditions in the short term with longer term investments that address climate change impacts.
- Achieving true partnership with mana whenua for waste management and minimisation.
- Limited visibility and influence over a significant amount of waste.
- Difficulty accessing economical recovery solutions.
- Lack of local data to prove effectiveness of recovery activities.





Nourished for Nil



Ngā Arawātea Opportunities

- Promoting circular activity (i.e. reduction and reuse).
- Strengthening partnerships with Māori and mana whenua.
- Enhancing the collection of material for recycling and recovery.
- Reviewing transfer station infrastructure to increase resource recovery.
- Minimising emissions from waste by focusing on organic, construction/demolition, and commercial waste.



Te matawhānui, ngā whāinga, ngā ūnga

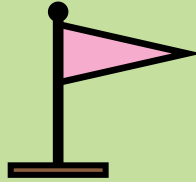
Vision, goals, targets



Matawhānui

Vision

“It is normal for our communities to waste less, work in partnership, and value our resources in order to protect te taiao.”



Ngā Whāinga

Goals

- 1.** Improve resource recovery and diversion of waste from landfill by working in partnership.
- 2.** Support the development of a circular economy in which the building blocks are in place to enable change.
- 3.** Prioritise circular activity in line with the waste hierarchy so our community produces less waste.
- 4.** Support our community to minimise emissions from waste and regenerate nature.



Ngā Ūnga Targets

- 1. Waste generation:** reduce the amount of material entering the waste management system by 10 per cent per person.
- 2. Waste disposal:** reduce the amount of material that needs final disposal by 30 per cent per person.
- 3. Waste emissions:** reduce the biogenic methane emissions from waste by at least 30 per cent (a national target).



Reusable cup scheme



Te utu o te whakahaere i ngā para

The cost of managing our waste

In 2023/24, the two councils spent over \$50 million on waste services (\$19 million for NCC, \$34 million for HDC). These costs are largely covered by user fees paid at the landfill and transfer stations, or through targeted rates for kerbside services.

Waste levy funds received from central government assist with many other functions including grants, education and some staffing costs.

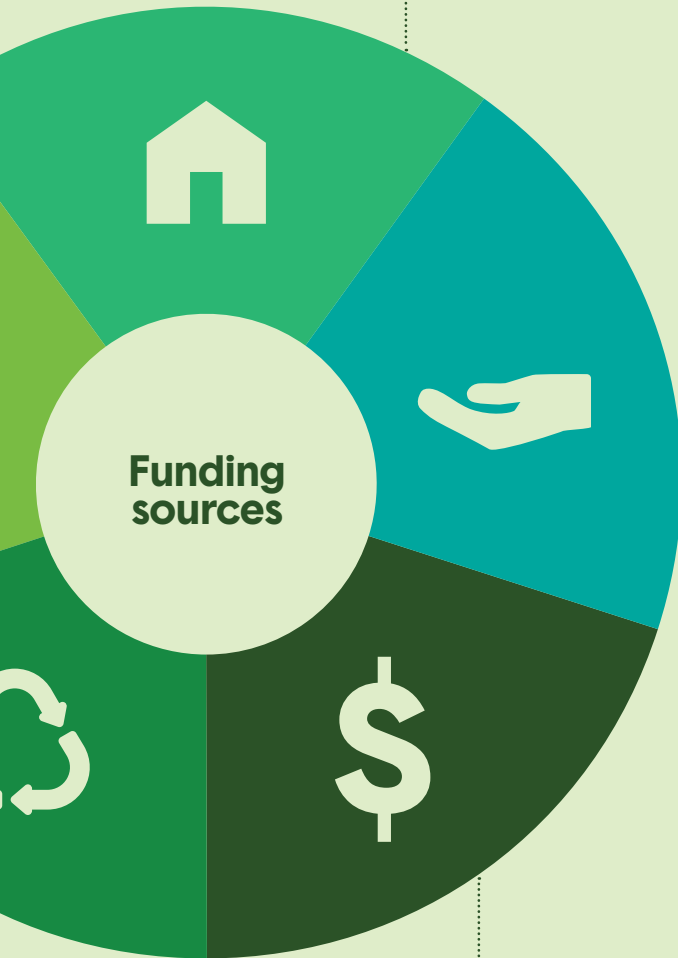
New actions in this plan depend on funding. Estimated at \$2.1 million per year, costs will be covered by existing budgets and funds central government waste levy revenue.

Budgets to deliver the activities set out will need to be included in the two councils' long-term plans.

Ōmarunui Landfill development fund
Makes sure that our communities have a safe way to dispose of rubbish.

User fees
For services accessed by users, e.g. fees to drop materials at the refuse transfer station or rubbish at landfill.





Targeted rates

For services that are only provided to specific properties, e.g. urban kerbside collection services.

Central government waste levy

Supports the councils to deliver on this plan.

General rates

Contributes to public good e.g. managing closed (old) landfills and removing dumped rubbish.



Ngā Aronga

Focus areas

The (draft) plan has identified 10 areas that we need to focus on to achieve our vision and transition to a more circular economy. Within each focus area we have outlined a number of actions which we will undertake over the next six years to reach our targets.

The focus is on making the most of what we have and increasing action in areas that will have the most impact on our progress.

The 10 focus areas collectively work to address four key issues identified during our waste assessment and engagement with the community – organics, resource recovery, education and collaboration.

These issues are outlined on the following pages and are the focus of the consultation with our community. The full action plan is included on pages 20 -72 of the draft WMMP.



**1. Whāngaia
te oneone
Feed the soil**



**2. Hangaia
he pūnaha hou
Build an
improved system**

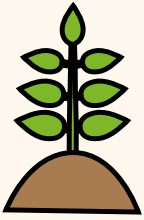


**3. Te whakapūmau
i ngā arawātea
Strengthen
opportunities**



**4. Whakaako,
whakamana tahi
Teach and
empower together**





1. Whāngaia te oneone

Feed the soil

Let's turn food scraps and garden waste back into something useful.

Organic waste – including food, garden clippings, paper and timber – makes up the largest portion of what ends up in our landfills. Instead of wasting these, we are looking for the best ways to divert them, through food rescue, composting or reuse opportunities. Why? To make our landfill last longer and cut carbon emissions.

By doing things differently, we can make a real impact on the environment and get closer to our waste reduction goals.

What are we planning to do?

Identify opportunities to divert more organic material from landfill. This will involve completing a feasibility study to determine the best option(s) for diverting organic waste from landfill. This could involve:

- Reducing organics from our rubbish wheelie bins.
- Collaborating with industry to provide more organic processing options.
- Working with the horticulture, agriculture and food processing sectors to reduce the organic waste created.
- Reviewing education programmes to support the community to reduce organic waste.

How would this help us achieve the goal?

Organic material is the largest portion of landfill waste that could be diverted to recycling or reuse.

By reducing the amount of organic waste we create, and diverting what we do generate for composting, we will be able to make significant progress towards our waste targets.



At home worm farm set up





2. Hangaia he pūnaha hou Build an improved system

We want to enable more recycling and reuse.

This includes investigating a Regional Recovery Park, as well as more options at refuse transfer stations, and updating the solid waste bylaw to support the services provided.

A well-designed system makes it easier for people to reduce the amount of rubbish going to the landfill. Investing in our facilities, supporting innovation, and advocating for producers to take responsibility for their products will create more recycling and reuse options and reduce landfill waste – a win-win!

What are we planning to do?

Invest in improved infrastructure to enhance circular activities like reuse and recycling. This will involve:

- Investigating and (if feasible) developing a Regional Recovery Park.
- Reviewing fees at our facilities to incentivise more diversion to reuse and recycling.
- Seeking opportunities at our transfer stations to provide more recycling and reuse options.
- Reviewing existing council bylaws, checking they align with the WMMP and services provided.

How would this help us achieve the goal?

To enable our community to minimise waste, our infrastructure must be fit for purpose and designed to maximise reuse and recovery of the waste we create.

We also need to ensure our infrastructure assets are resilient to climate change and can accommodate a shift to a more circular economy so we can make the most of our investment.



Rural recycling station





3. **Te whakapūmau i ngā arawātea** **Strengthen opportunities**

To reduce commercial waste and keep it out of landfill, we need to work together.

.....

Working together means collaborating with businesses to share best practices, improve local services, and find cost-effective solutions.

By getting a better understanding of the drivers of commercial waste and supporting shared solutions, we can increase recycling and reuse opportunities, while making waste management more accessible and efficient.

What are we planning to do?

.....

Get a better understanding of where commercial waste comes from and how this can be reduced or diverted from landfill. This will involve:

- Building relationships with the commercial and rural sectors to share best practice, and identify and support opportunities to reduce waste.
- Mapping commercial waste to better understand opportunities to reduce waste.
- Collaborating with mana whenua, commercial and industry sectors to provide more local services and infrastructure and invest in shared initiatives to maximise cost effectiveness.

How would this help us achieve the goal?

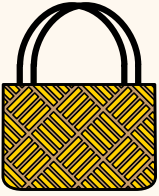
Commercial waste is the largest source of landfill waste and councils have less influence over how this waste could be reduced. Improved understanding and collaboration will be key to reducing commercial waste and increasing options for reuse and recycling.

It will also support more joint funding opportunities and cost-effective solutions through economies of scale.



Building deconstruction – window glass recycling





4. **Whakaako, whakamana tahi** **Teach and empower together**

Creating awareness and putting in place supporting actions is key to reducing waste and encouraging circular solutions.

.....

We will keep providing education, look to expand our funding to support new initiatives, and trial innovative projects that boost recycling and reuse.

For this plan to succeed, everyone needs to play a part. By making it easier for people to understand their impact, adopt new behaviours and make best use of waste services, we can create lasting change. Collaboration will also be essential to share knowledge and develop solutions that benefit the whole community.

What are we planning to do?

.....

Support waste minimisation and circular approaches through education and behaviour change programmes. This includes:

- Continuing to offer education and raise awareness of waste minimisation and circular activities.
- Reviewing the waste minimisation fund framework to best support waste minimisation activities.
- Supporting trials for initiatives that will increase diversion and recovery.
- Collaborating to identify opportunities that support circular activity.

How would this help us achieve the goal?

To achieve our vision, we all need to take responsibility for our waste. For the implementation of this plan to be successful, we need to ensure that our community is aware of how people can make a difference and promote how our services should be used to achieve the vision.

We also need to collaborate to share knowledge and identify cost-effective opportunities.



Council waste teams at local event



Tukanga whiriwhiri

Consultation process

We want your input on our draft Joint Waste Management and Minimisation Plan (WMMP) as we move towards a more circular economy in Heretaunga Hastings and Ahuriri Napier.

- What do you think of our updated waste plan?
Love it | Needs tweaks | Not a fan (Why not?)
 - Which of these four key issues matters most to you?
(Pick one: #1, #2, #3, #4 or all of them)
 - Is there anything we've missed that should be in the plan? Let us know!
 - Got any other thoughts, ideas, or suggestions
-

For more information about the issues, refer to the 2024 Waste Assessment which can be found on both councils' websites.

The Statement of Proposal, Draft Joint Waste Management and Minimisation Plan, Waste Assessment and the submission form can be found at:

- www.hastingsdc.govt.nz and www.napier.govt.nz
- Our Customer Service Centres
 - 207 Lyndon Road East, Hastings
 - Dunvegan House, 215 Hastings Street, Napier
- Public libraries in Flaxmere, Hastings, Havelock North, Napier and Taradale.

If you want to speak about your submission in front of the Joint Waste Futures Project Steering Committee (a joint HDC & NCC committee that has the delegated authority to oversee the development of the WMMP), please let us know on your submission form.

We will be holding hearings for the draft WMMP in late May. The committee will then make the final decision about the draft WMMP by August 2025. Details of the hearings will be confirmed in a letter acknowledging your submission and will be advertised on the council websites.

Consultation on this draft WMMP will be held at a similar time to consultation on both councils' Solid Waste Bylaws. You can check the councils' consultation websites for more information (see next page).

There are a number of ways you can lodge your submission:

Online

Fill out the online form at either

- www.myvoicemychoice.co.nz
- www.sayitnapier.nz

By email

- reducewaste@hdc.govt.nz
- wasteteam@napier.govt.nz

(write Draft Joint Waste Management and Minimisation Plan in the subject)

By post: Attention Draft Joint Waste Management and Minimisation Plan on envelope

- Hastings District Council, Private Bag 9002, Hastings 4156
- Napier City Council, Private Bag 6010, Napier 4142

Fill out a form at one of our Customer Service Centres

- 207 Lyndon Road East, Hastings
- Dunvegan House, 215 Hastings Street, Napier
- at any Hastings or Napier public library

Submissions are open from 7 April until 11 May 2025

Please note that all written submissions, including contact details on the submission, will be made available to the public and media and on our website, unless you specifically request that your contact details are kept private.

For further information on this consultation, please phone your Council.



He whakarāpopoto Summary overview

