

Office Use Only
Date Received:



SUBMISSION FORM 5

Submission on Private Plan Change 8 to the Hastings District Plan –
Hawke's Bay Regional Council

Submissions can be:

Electronic: www.myvoicemychoice.co.nz

Posted to: Plan Change 8, Environmental Policy Manager, Hastings District Council, Private Bag 9002, Hastings 4156

Delivered to: Civic Administration building, Lyndon Road East, Hastings

Emailed to: policyteam@hdc.govt.nz

We need to receive your submission by 5pm, Friday 3 October 2025

1. Your details:

Full Name: [Transpower New Zealand Limited \("Transpower"\)](#)

Postal Address: [31 Gilberthorpes Road, Islington 8042, PO Box 21154, Edgware, Christchurch](#)

Email: environment.policy@transpower.co.nz

Phone: [\(03\) 590 6926](tel:(03)5906926)

2. The specific parts of Plan Change 8 that my submission relates to are: *(Give Details)*.

[The plan change in its entirety](#)

3. My submission is that:

[Refer attached](#)

4. I/We seek the following decision: **(Please give precise details, this section must be completed to ensure a valid submission)**.

[Retain or amend the provisions of Private Plan Change 8 to give effect to the NPSET as set out in attached including such further alternative or consequential relief as may be necessary to fully achieve the relief sought in this submission.](#)

5. Please indicate whether you wish to be heard in support of your submission:

[Transpower wishes to speak at the Hearing in support of its submission; or](#)

~~[I do not wish to speak at the Hearing in support of my submission.](#)~~

6. Please indicate if you wish to make a joint case:

If others make a similar submission, please tick this box if you would consider presenting a joint case with them at the Hearing.

7. Signature of person making submission or person authorised to sign on behalf of person making submission

(A signature is not required if you make your submission by electronic means).

Date: 25 / September / 2025

If you have used extra sheets for this submission, please attach them to this form and indicate this below:

Yes, attached are two extra sheets ~~No, I have not attached extra sheets~~

PLEASE NOTE: ALL SUBMISSIONS ARE MADE AVAILABLE TO THE PUBLIC.

Submission by Transpower New Zealand Limited on Private Plan Change 8 to the Hastings District Plan

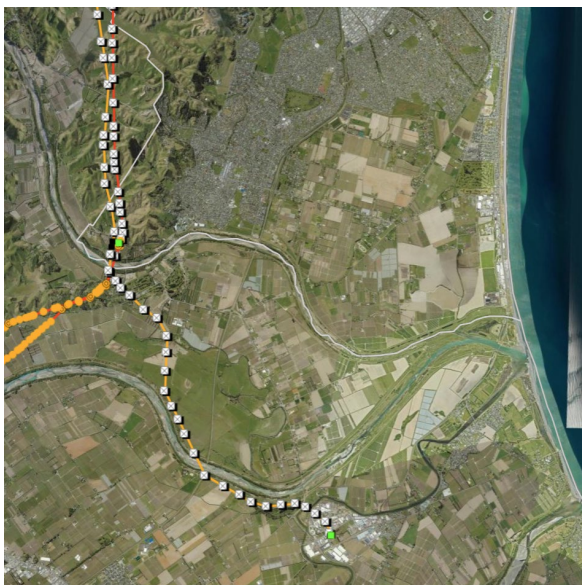
Background to Transpower

Transpower New Zealand Limited (Transpower) is a State-Owned Enterprise that plans, builds, maintains and operates New Zealand's National Grid, the high voltage transmission network for the country. The National Grid links generators directly to distribution companies and major industrial users, feeding electricity to the local networks that distribute electricity to homes and businesses. The National Grid comprises a high voltage network (some 11,000 kilometres of transmission lines (including underground and submarine cables) supported by towers and poles) which runs the length of the country and links major generation (such as the South Island hydro lakes and central North Island hydro and thermal generation sources) to major loads in New Zealand's main urban centres.

Relevance of Private Plan Change 8 to Transpower

Private Plan Change 8 (PPC8) would amend the Hastings District Plan rules to enable Hawkes Bay Regional Council to carry out essential earthworks for river control and drainage without the need to comply with the district plan performance standards or obtain resource consent. The performance standards generally relate to matters such as volumes of earthworks.

Transpower has existing National Grid assets within Hastings District that are within proximity of, and in some places traverse the rivers and regional council stopbanks (specifically along the Ngaruroro River, Tutaekuri River and the Karamu Stream) where the proposed regional council permitted earthworks could be undertaken. The image below to the left shows existing National Grid assets, and the image below on the right shows the stopbanks.



Reasoning for Relief Sought

A key component of ensuring the ongoing operation of the National Grid is to ensure activities undertaken by other parties, including earthworks, do not compromise National Grid assets.

Earthworks and land disturbance can compromise the operation and safety of the National Grid. More specifically, earthworks have the potential to undermine transmission line structures, generate dust (which can cause a number of issues for conductors), and reduce the clearances between the ground and conductors. Earthworks also have the potential to restrict Transpower's ability to access the line and locate the heavy machinery required to maintain support structures around the lines and may lead to potential tower failure and constraints on the operation of the line.

Based on the above, Transpower supports the provisions in the operative Hastings District Plan (specifically permitted rule NU7, the default restricted rule NU11 and non-complying rule NU16, and performance standard 22.1.7B) which manages earthworks within proximity to existing National Grid assets. The operative rules and standard give effect to the National Policy Statement on Electricity Transmission 2008 (NPSET) and in particular policy 10 which requires that councils, through their district plans, manage third-party development and activities (which includes earthworks) that would compromise the operation, maintenance, upgrading and development of the electricity transmission network.

Relief Sought

Transpower understands from the documentation supporting PPC8 (specifically the Plan Change Overview Report) and earlier consultation with Transpower that the National Grid earthworks rules NU7, NU11 and NU16 (and associated Specific Performance Standard and Term 22.1.7B) within the Network Utilities Chapter 22.1, will continue to apply.

On the basis rule NU7, NU11 and NU16 and performance standard 22.1.7B will continue to apply to the proposed works subject to the plan change, **Transpower is neutral on PPC8.**

Should the above provisions not continue to apply, Transpower would oppose the plan change as it applies to National Grid assets on the basis it would not give effect to the NPSET.

